



ISSUE NO.25 | WINTER 2020

THE GAZETTE

The Official Newsletter of Wimbledon Park Cooperative

General Meeting

General Meeting on Wednesday 25th November at 7pm.

Using Zoom online for those with internet, audio and video connections and Zoom free phone call for those who want to listen in and join in if they want to. Contact the office to register for joining details. Agenda includes parking updates and permits, and store sheds.

Download the minutes from the last general meeting from the Co-op website at:

www.wimbledonparkco-op.org.uk/wp-content/uploads/2020/02/22.01.2020-GM-Meeting-Minutes.pdf



Website

The website is being updated and will soon include a section on frequently asked questions.

Find us at
www.wimbledonparkco-op.org.uk

Gas works

Gas works at Wimbledon Park Court and Ambleside by Action Shake Limited (ASL) are coming to an end, **the old gas supply to flats will be disconnected on Wednesday 25th November.**

Contact details are:

ASL Customer Service team:

0800 084 2935
(Monday to Friday,
8.30am until 4.30pm)

Customer Liaison Officer:

Michael Dobson
Mobile: 07384 510600
(Monday to Friday,
8.30am until 4.30pm)
Email: [michaeldobson@
actionsshake.co.uk](mailto:michaeldobson@actionsshake.co.uk)

SGN Customer Service team:

0800 912 1700



City Harvest

City Harvest continue to deliver fresh community food to the estate every Wednesday. Christmas deliveries will be on 23.12.20 and 30.12.20. Here are our happy delivery drivers back in the summer.



office appointments

The office is **appointment only** until further notice, following the Government guidelines.

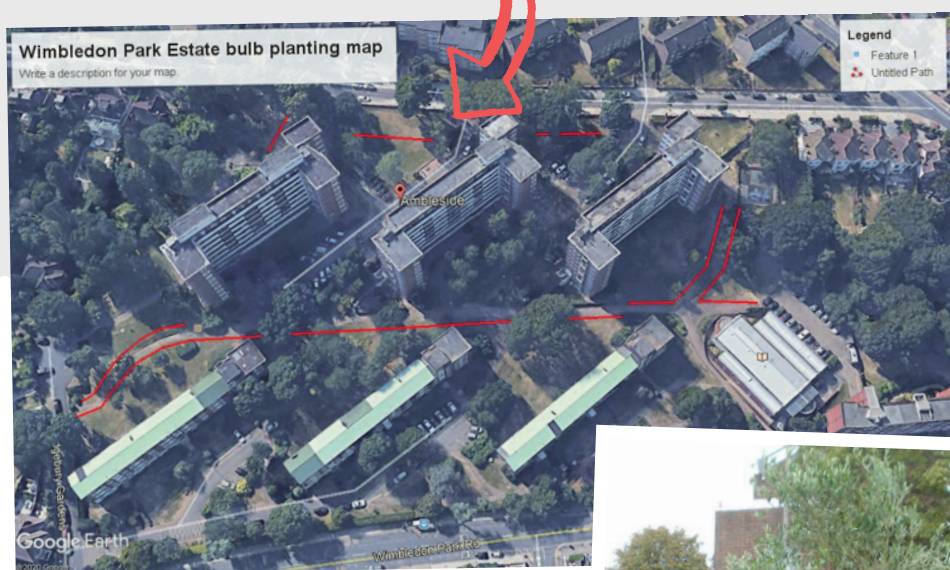
Estate gardens

Ongoing work is being done in the gardens to tackle the overgrown areas and improve the look of the estate.

Our gardeners have planted a huge number of bulbs alongside many of the paths (shown by the red lines on the picture below)

to provide a colourful display of flowers in the spring.

They will also be planting olive trees and shrubs in the bed by the car park opposite Briardale, restoring the screening in front of the cars (see picture of a similar planting below).



Gardening Committee

If anyone is interested in having an input in this work and helping maintain the community garden please contact the office to be put in touch with the gardening Committee.



Parking permit updates

Old estate permits issued by WPC expired in February 2020. All new permits being issued are valid to April 2021. **From April 2021, the Co-op will be making an administration charge of £20 to bring us in line with Wandsworth Council's procedures for processing replacement or duplicate permit applications.**



Abseilers

Abseilers doing lightning conductors on blocks as part of the electrical upgrades to the estate are now working on Ambleside.



It's not every day you have abseilers outside your kitchen window!

Major works

Major works Wimbledon Park Court 1-19 ending January 2021

Abandoned vehicles

We have counted 5 abandoned vehicles so far in the Library car park, Briardale car park and Allenswood car park. Estate parking spaces cannot be used for vehicles that are SORN, untaxed or with no MOT as your parking permits are invalid under these circumstances. We will be contacting the DVLA to request owner details so notices can be serviced. **In the meantime, if one of those vehicles is yours, please contact the office to discuss the matter before it goes to enforcement!**

